

LEADER

Community-Led Local Development



What is LEADER?

Since its inception in 1991, LEADER has provided rural communities and businesses with the resources necessary to actively engage and direct the economic and social development of their local area, through 'bottom up' or community-led local development.

The current LEADER budget allocated to Ireland, funded through Ireland's Rural Development Programme 2014-2020, will provide €250 million in financial grant aid 'to promote social inclusion, poverty reduction and economic development in rural areas' up to the year 2020.



Local Action Groups

Decisions on LEADER funding are made at a local level by a network of Local Action Group (LAGs), through the framework of a community-led, Local Development Strategy (LDS). LAGs are made up of groups of people from the local community as well as both public and private partners from a defined geographical area.

Currently, there are 29 LAGs who have contracts in place with the Department of Rural and Community Development to support the sustainable development of their sub-regional area.

Case Study

Wilde Irish Chocolates, Co. Clare

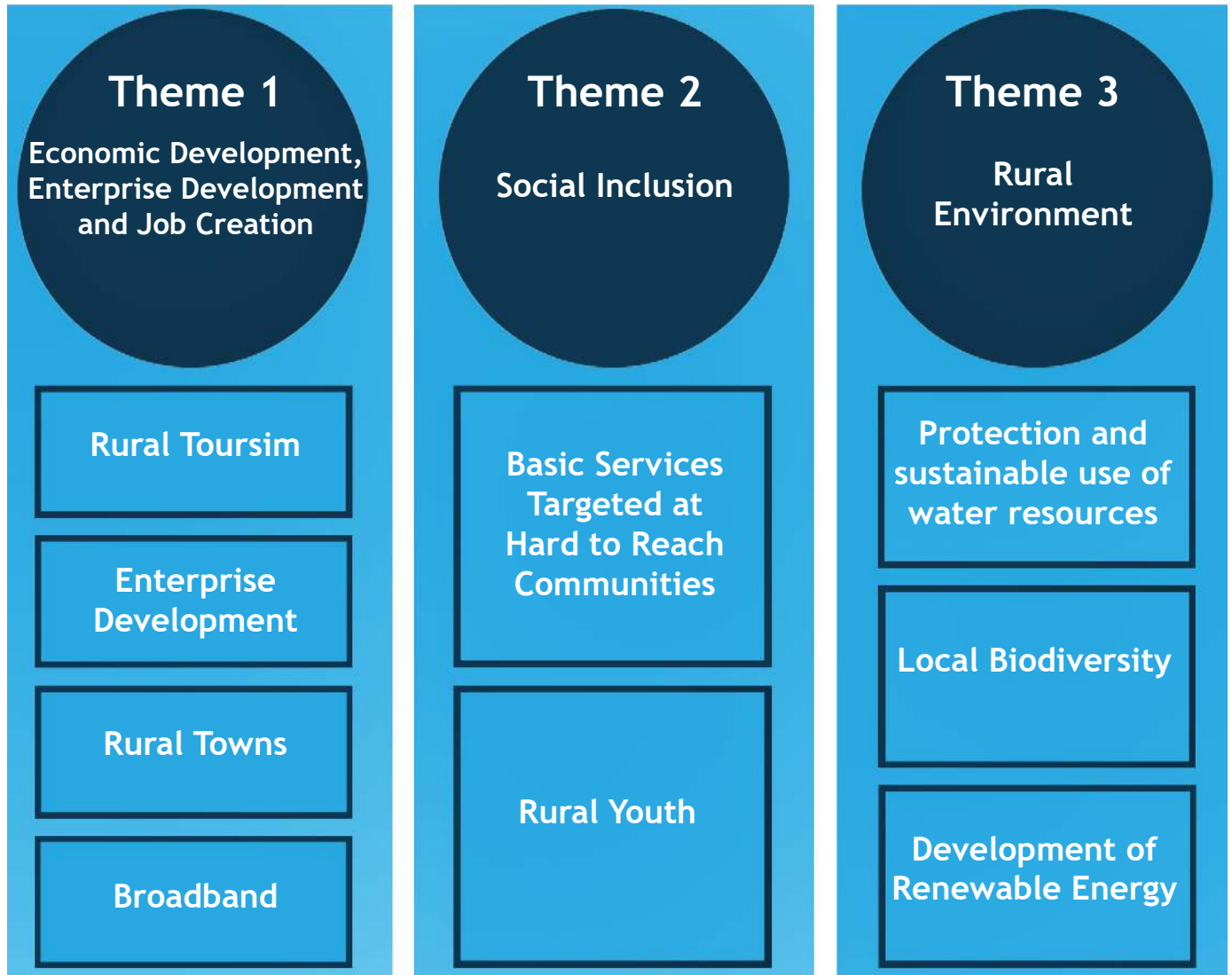
'Making my artisan chocolate factory in Co. Clare open plan and making it possible for visitors and tourists to see us actually making chocolates would only have been a dream without the support of LEADER'.

Patricia Farrell (Owner)

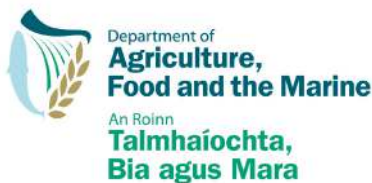


LEADER 2014-2020 Themes and Sub-Themes

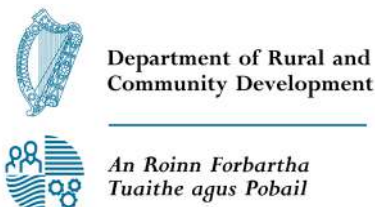
The LEADER programme for 2014-2020 includes themes that reflect the overarching needs of rural Ireland. Each theme contains a number of sub-themes which are considered the key areas in need of the greatest support and have the greatest potential to promote the sustainable development of rural communities in Ireland (please see below).



For further information on LEADER funding in your local area, including how to apply, please contact your Local Action Group.



National Rural Network



The National Rural Network (NRN) is a component of the Rural Development Programme 2014-2020 (RDP), led by Irish Rural Link in partnership with The Wheel, NUI Galway and Philip Farrelly & Co.