



# Bees



## Why are bees so important?

Bees are an essential pollinator of crops and plants.

One third of the food we eat would not be available without bees



Livestock are dependent on bee-pollinated forage plants such as clover.

1/3rd of our 98 bees species are at risk of extinction.



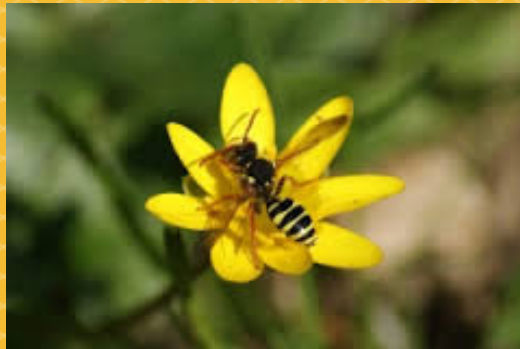


## What can we do to help bees?



**The All Ireland pollinator** plan identifies 82 actions to make Ireland pollinator friendly.

This will be done by providing food and shelter across land.



- Manage existing hedgerows
- Protect existing flower-rich natural/semi natural habitats
- Traditional hay meadow management
- Manage some pastures to support pollinators
- Set aside patches of less productive grassland for pollinators
- Protect existing solitary bee nesting areas (e.g. dry stone walls, south or east facing earth banks, tussocky grass).